

INITIATIVE FOR
**Climate Action
Transparency**

ICAT



Piloting of the Transformational Change Guideline
for the Citizens of the Future (CoF)

Content

- Pilot purpose and scope
- The CoF action
- Impacts and characteristics identified through the Transformational Change Guideline
- Identified barriers
- Stakeholders participation
- Outcomes and insights from the assessment using the Transformational Change Guideline
- Final recommendations



Pilot purpose and scope

Pilot purpose and scope

Analyze the extent of transformational change expected from the implementation of the Citizens of the Future project as a non-formal education approach.



FIGURE 4 LOCATION OF THE CITY OF TARIJA

Source. Red escuela web page.



The assessment considered a mix of qualitative and quantitative approaches to evaluate the impacts of the CoF Project, and determine its transformational impact in the current education system and approaches in 1 school in the city of Tarija, Bolivia.

-- Introductory Guide --

Impact Assessment Guidance

Greenhouse gas impacts:

Renewable Energy Buildings Efficiency

Transport Pricing

Agriculture

Forest

Sustainable Development

Transformational Change

Supporting Guidance

Stakeholder
Participation

Technical Review

Non-State and
Subnational
Action

The CoF action

Objective

“Provide children and young people with skills, instruments, tools and practices that promote behavioral changes and contribute to the construction of human capital with values that allow a sustainable integral and resilient to climate change development and other challenges that they will face in the future”



Vision

“Enable all children to fulfil their potential as empowered individuals, constructive members of their communities prepared to face the challenges climate change will bring in the future, in which all children are productive and engaged citizens in the development of their country and the world”

Approach

"Learning comes from the active participation of children, teachers, the environment and society"

Approach

The CoF has a non-traditional educational approach, where children learn by doing, with an inside to outside perspective.

- Environment
- Society
- Person



From inside to outside

Approach



Learn by doing/ no grading

Do

Review

Learn

Apply



Active participation

Students do and at the same time think about the work done and the purpose behind it so that they can improve their reasoning abilities



Collaborative learning

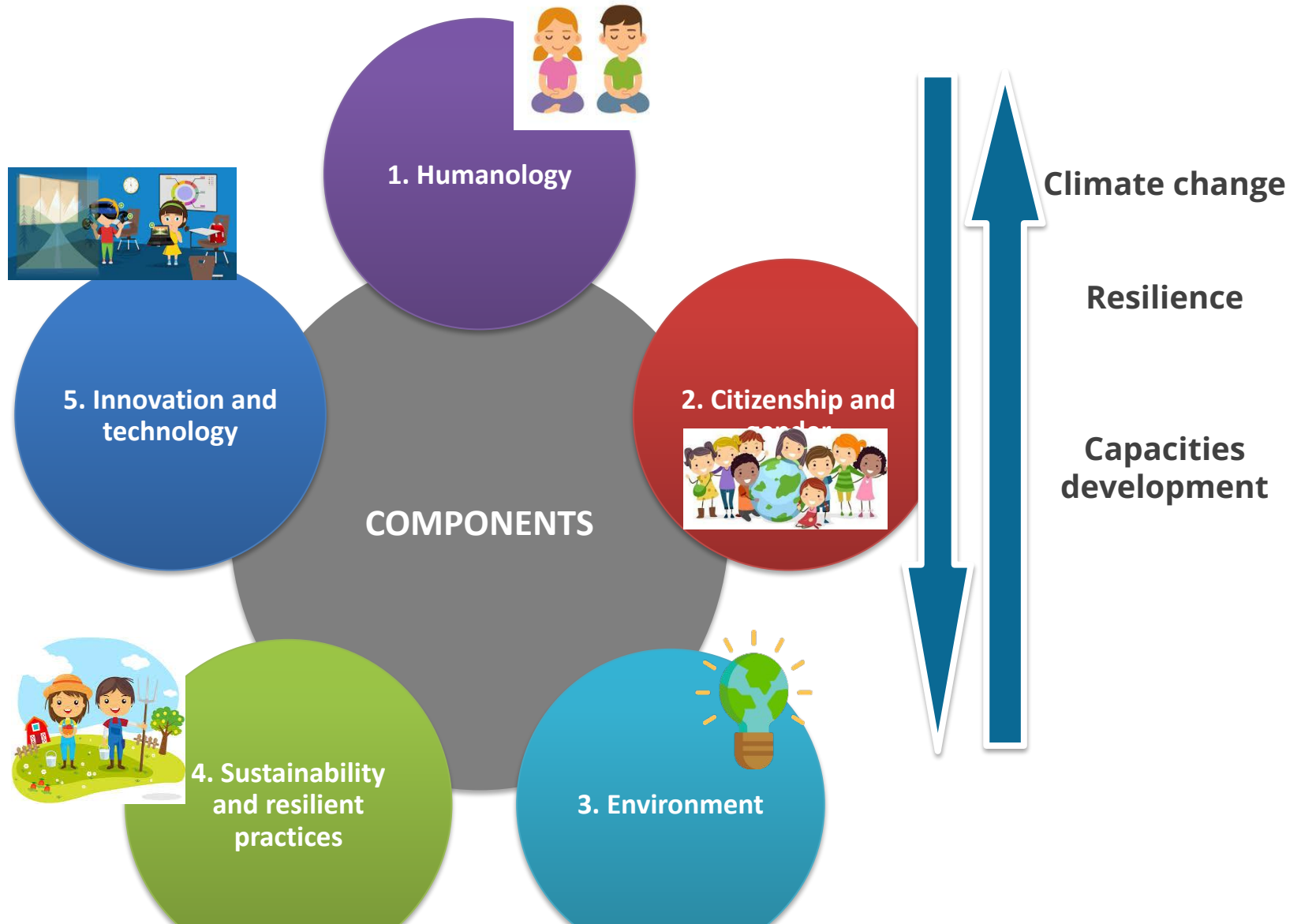
Teaching model that consists of the gradual cognitive development of the students and their interaction between people



Interactive spaces

Exercises and activities that help children develop analytical skills and learn how to apply academic theories to real-world problems

Components



Approach

“Citizens prepared to face the challenges of climate change and the future”



Impacts and characteristics identified through the Transformational Change Guideline

Impacts

Non-traditional learning methodology, which helps children to understand and deepen knowledge in a practical and fun way

Incidence in the behavior change in children and young participants

Development of technology and non-formal education tools contextualized to the place

Citizens of the future who offer a different perspective to new problems, and clearly express their ideas and feelings

Leaders of the future aware of their role and connection with society, the environment and their city. In a way that promotes equitable, fair and sustainable solutions.

Brave, confident and daring children, capable of efficiently managing their emotions, making coherent and appropriate decisions

Active role in the society

FORM AGENTS OF CHANGE

Characteristics of transformational change

Transformational impact

Outcomes - GHGs and SDGs

Scale of outcome

Sustained nature of outcome

Processes

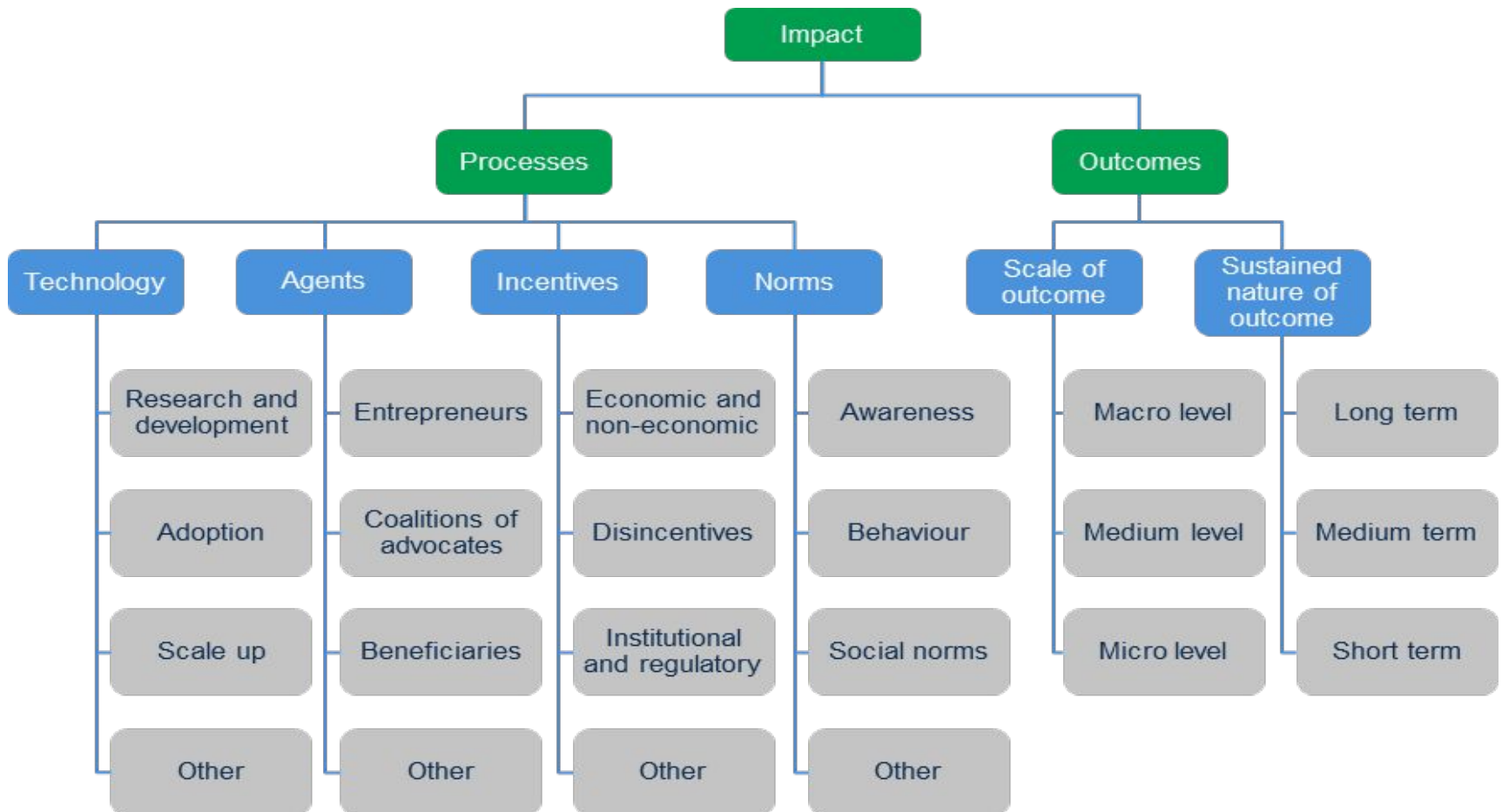
Technology

Incentives

Agents

Norms

Characteristics of transformational change



Impacts and characteristics

Through the assessment this are the most influenced characteristics identified:

Outcome impacts

- Scale of outcome:
Micro level
- Outcome sustain
overtime:
Medim and short period

Process impacts

Technology

- Adoption

Agents

- Beneficiaries

Norms

- Awareness
- Social norms
- Behaviour

Identified barriers

Barriers

Considering the study scope (ex-ante assessment), the assessment of the barriers helped to include preventive measures in the design of the CoF and prioritize those with high impact potential to completely counteract the envisaged effect of the characteristic.

The highest score was given to:

- Financial Barrier (Lack of economic resources for the implementation of the CoF)
- Social Barrier (Scare and/or insufficient participation and involvement of children in the activities may obstruct the implementation, development and scale up the project)
- Institutional Barrier (Insufficient support from municipal government authorities hinder the adoption and proper implementation of the initiative).

During the assessment data availability to establish indicators and starting situation was also an identified barrier.

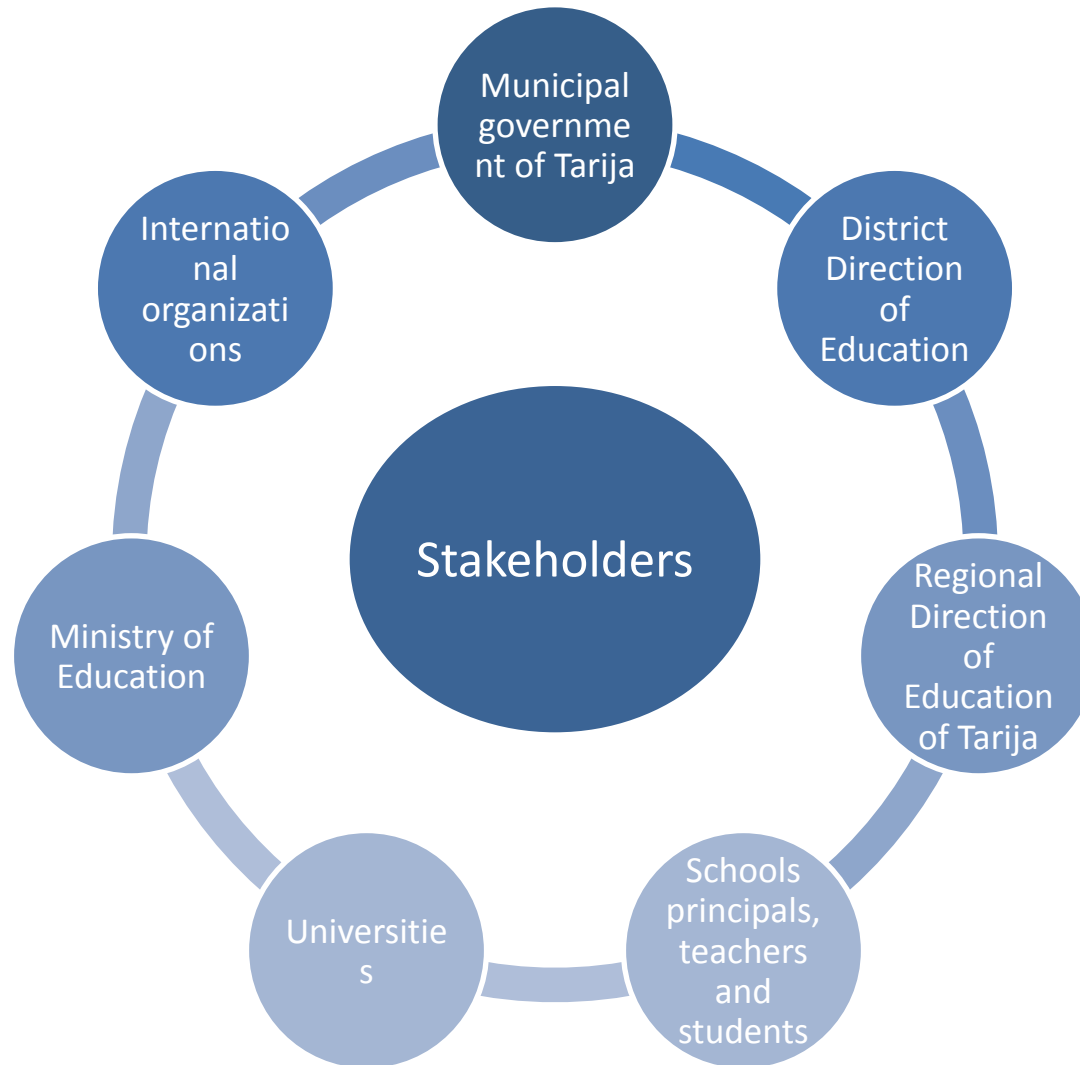
Stakeholders participation

Stakeholders participation

The process of stakeholder's participation during this assessment was developed through the following steps:

- Make initial identification of stakeholder groups and establish a first contact (via email, phone call)
- Provide all relevant information to stakeholders
- Establish meeting and field-visit schedules
- Conduct semi-structured interviews and workshop
- Use information to improve the impact assessment
- Provide feedback to stakeholders on how their input has been used

Stakeholders participation



Outcomes and insights from the assessment using the Transformational Change Guideline

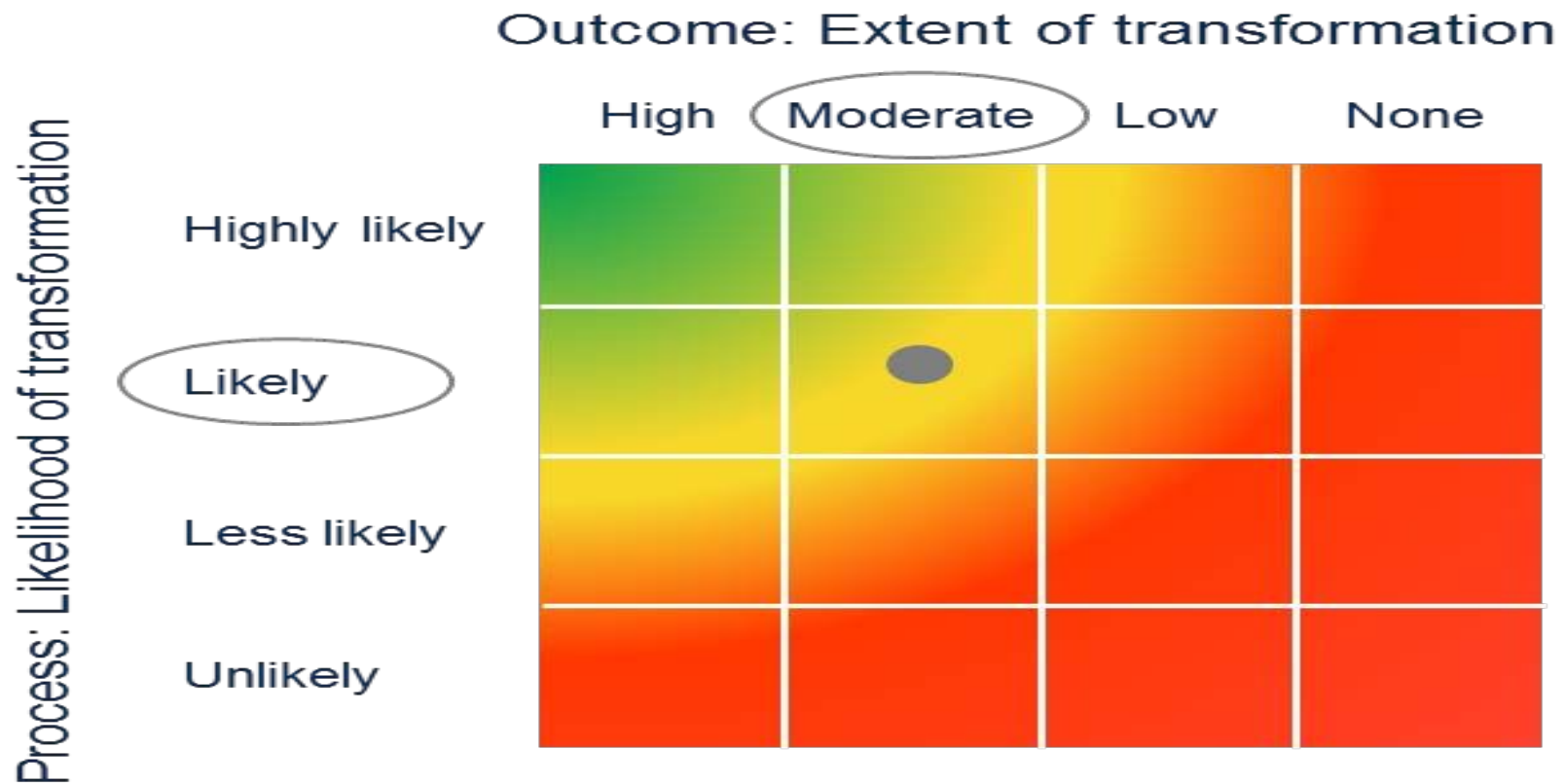
Outcomes and insights

The final result for the CoF concludes that:

- The extent of transformation expected by the policy is moderate and the outcome is likely to be sustained over time.
- Its expansion could be improved if there is guarantee of institutional support.
- Stakeholders showed interest in the action and willingness to help and implement the pilot project
- In order sustain the action it needs to have a solid financial scheme with external funds (CAF, IDB) and parents economical support.
- The assessment helped us to adjust the CoF proposal taking into account stakeholder's opinions and other options which were not considered at the beginning.

Outcomes and insights

Transformational impact:



Final recommendations

Final recommendations



The main recommendation would be to include the concept of adaptation to climate change to the concept of transformational change and to the objective of the guideline. Adaptation is key to transform people, societies, countries and the world in a more sustainable and fair place.

THANKS

<http://citizens-of-the-future.com/>

www.ciudadanosdelfuturo.com

www.sasa-bolivia.com

